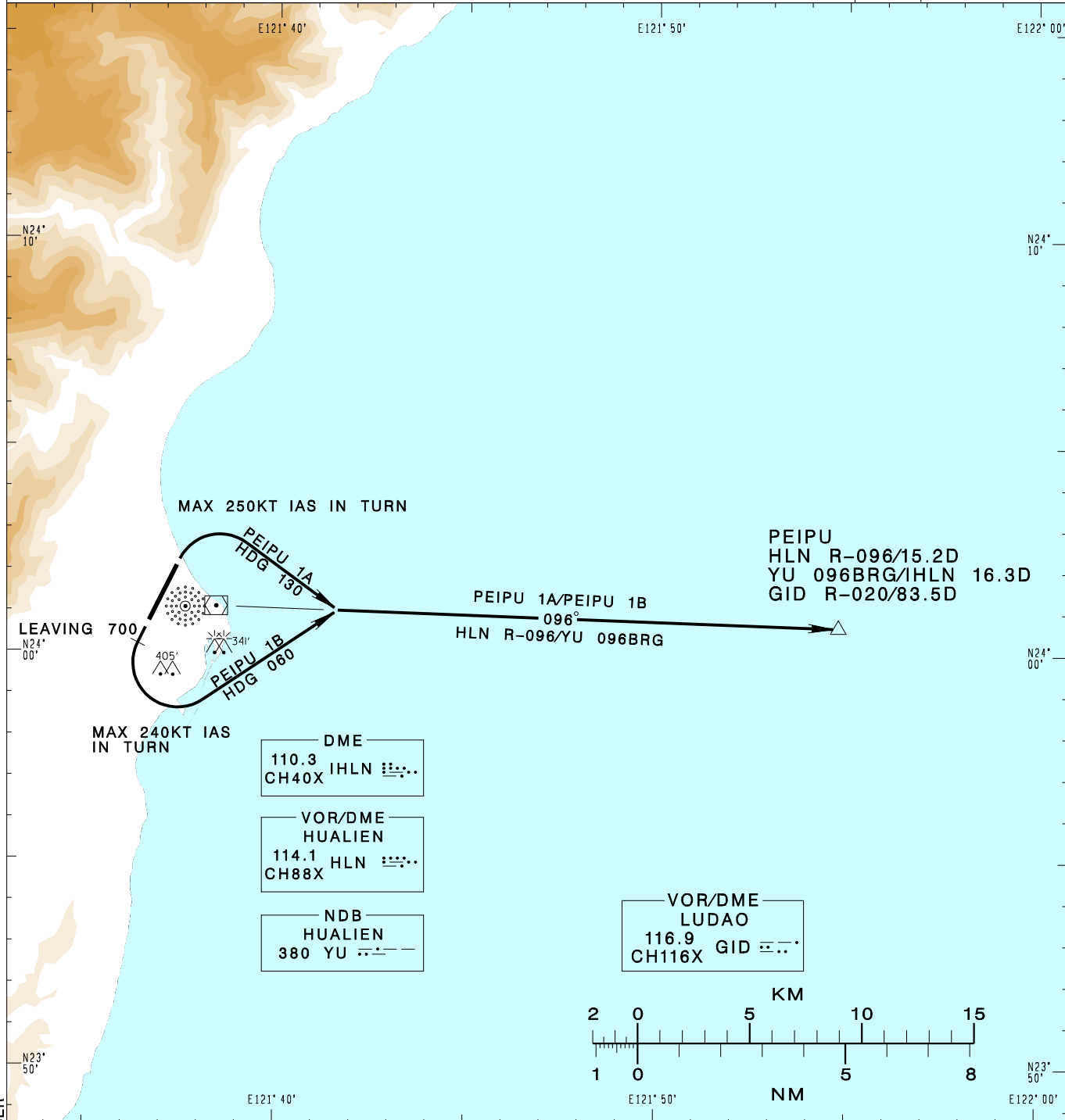


花蓮機場
HUALIEN AD

RCYU SID
PEIPU 1A(RWY03)
PEIPU 1B(RWY21)

TAIPEI APP 124.0 119.1 330.2 276.8				HUALIEN TWR 118.1 126.18 236.6			VAR 4°W
Apt Elev: 51'		Trans Level: FL130		Trans Alt: 11,000'			
BEARINGS ARE MAGNETIC; DISTANCES ARE NAUTICAL MILES; ELEVATIONS, HEIGHTS IN FEET							MSA HLN VOR 25NM



CHANGES: NEW PAGE NUMBER

PEIPU ONE ALFA DEPARTURE
After departure, turn right HDG 130 to track HLN R-096/YU 096BRG to PEIPU to join B591.

PEIPU ONE BRAVO DEPARTURE
Depart RWY HDG until leaving 700ft, turn left HDG 060 to track HLN R-096/YU 096BRG to PEIPU to join B591.

- NOTE**
1. PEIPU 1A: Max 250KT IAS in turn.
 2. PEIPU 1B: Requires a minimum climb gradient of 5% (305ft/NM) until 2000ft. Max 240KT IAS in turn.
 3. Caution high terrain west of the airport.
 4. A 341ft MSL stack at 1.52NM EAST of THR03.
 5. A 405ft MSL tree at 1.18NM SE of THR03.